

HERBIER
REALISE PAR
MADAME MARIE-PAULE BILGER

PLANTES OBSERVEES
SUR LE SITE INDUSTRIEL DMC A MULHOUSE

(Déterminations confirmées par Edmond HEROLD)



Asplenium ruta-muraria



Galinsoga ciliata



Papaver rhoeas



jonquille

Ceraiste
vulgaire

Drave printanière



Solidago gigantea



Arenaria serpyllifolia



Triofolium repens



Chaenorhinum minus



Achillea
mille folium



Silene vulgaris
in flata

Geum urbanum

Salvia pratensis





Petrorhagia prolifera



Trifolium repens

Hypericum perforatum



Lycopodium europaeus



Euphorbia helioscopia



Clematis vitalba

Veronica
chamaedrys



Geopis
capillaris

Aegopodium
podagraria



Prunella vulgaris



Persicaria maculosa

Vicia sepium

Plantago lanceolata



Sonchus oleraceus

Urtica dioica

*Cichorium
intybus*

*Centauria
jacea*

*Amaranthus
viridis*

*Equisetum
arvense*

*Haracleum
sphondylium*



Epilobium hirsutum

Impatiens glandulifera





Lamium maculatum



Viola odorata



Solanum nigrum

Ciboulette



erodium
à feuilles de ciguë



perce-neige



Cardamine
Aérissée



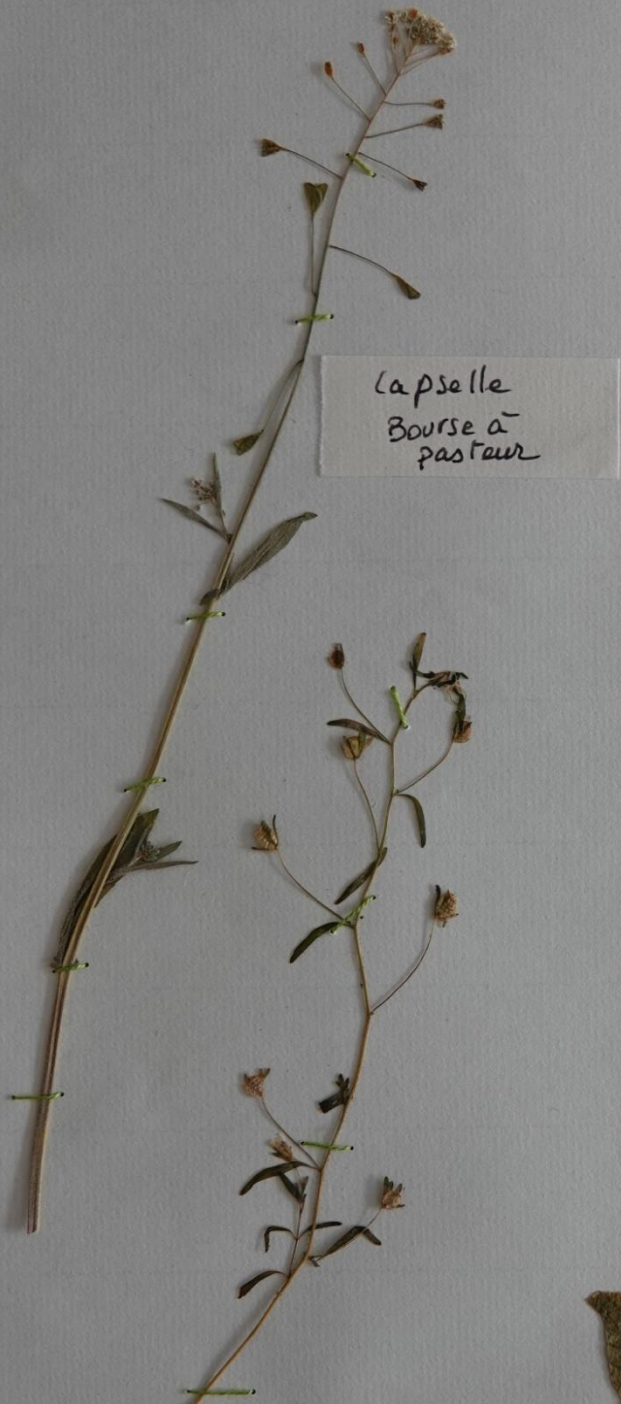
Marguerite

Sénégon
commun

Risèda

Verveine
officinale





Capselle
Bourse à
pasteur



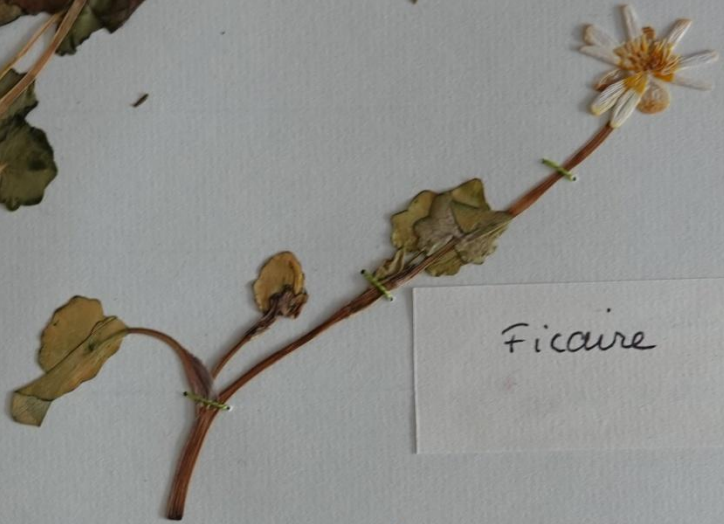
Lamier
pourpre



Petite
linairé



Primèverè
officinale



Ficaire



Tussilage



Corydale

Duquet

Alliaire

Muscari

Nerouze rouge



bouton
d' OR

Luzule
champêtre

Saxifrage
tridactyle

Sisymbre
officinal

Nyctotris
rameux



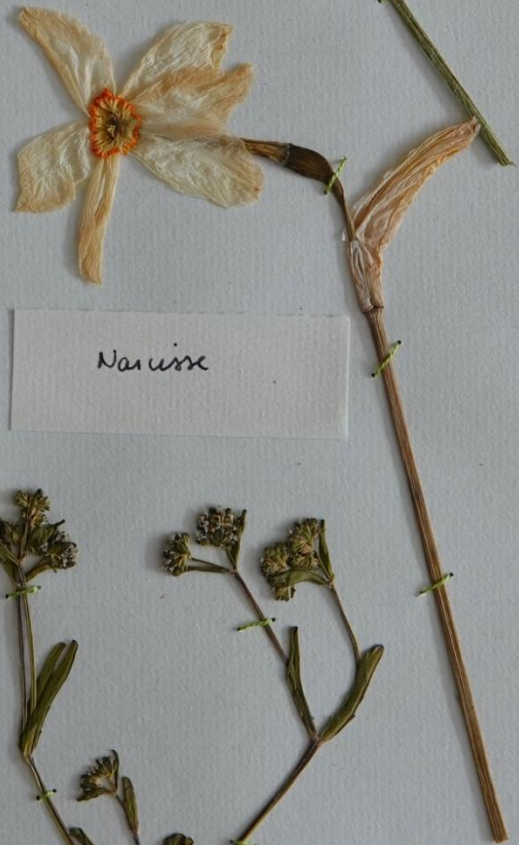
Varioque
champêtre



Iris d'eau



Bleuet



Narcisse



Iris



mache potagère

Arabette
des
dames



Vesce
des
haies

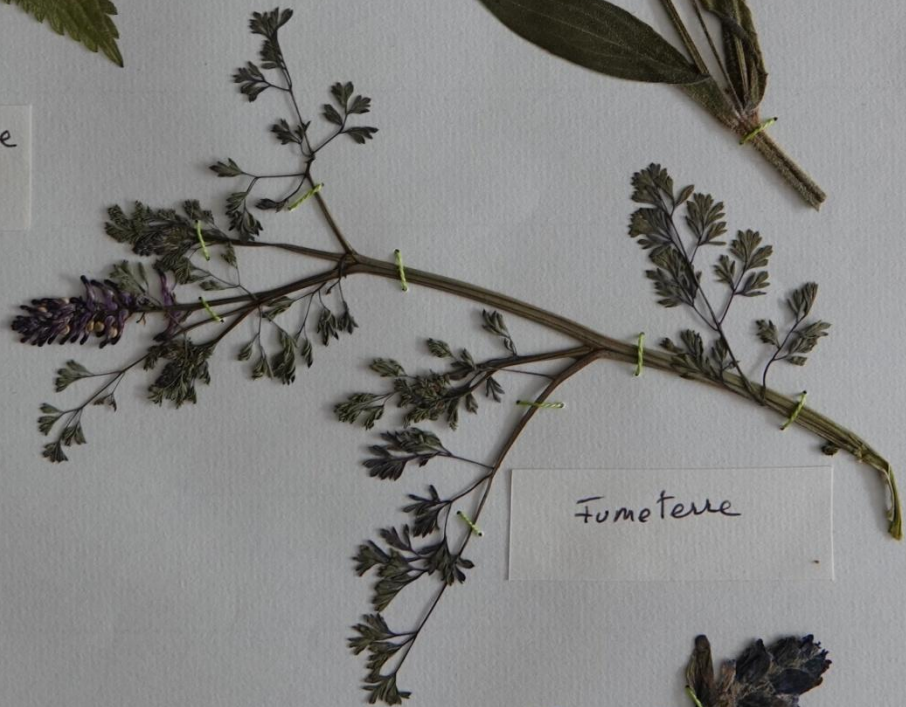
Vesce
hérissée



Ortie blanche



Campanon blanc



Fumeterre



Bogie rampant



Geranium
découpé



Nielle
des
blés



Eglantine



Tulipe



Pious hieracioides

Chamomilla perforata inodora



Daucus carota



Glechoma hederacea



Senecio inaequidens



Galium mollugo



Geranium pyrenaicum

Campanula trachelium

Epilobium dodonaei





Oxalis sp.



Taraxacum officinale

Campanula rotundifolia



Trifolium pratense



Viola sp.



Epilobium dodonaei

Erigeron annuus

Sherardia arvensis

Lotus corniculatus

Medicago lupulina





Sherardia arvensis



Plantago lanceolata



Hypochaeris radicata



Nycelis (Lactuca) muralis



Lapsana (Lamproloma) communis



Epilobium hirsutum



Medicago sativa




Convolvulus
arvensis




Chenopodium sp.




Eupatorium
cannabinum

A dried plant specimen of Polygonum aviculare, showing a long, thin stem with small, opposite, ovate leaves and a terminal spike of tiny flowers.

Polygonum aviculare

A dried plant specimen of Cardamine pratensis, featuring a single stem with a terminal raceme of light purple flowers and a few small, lanceolate leaves.

Cardamine pratensis

A dried plant specimen of Potentilla reptans, showing a stem with several large, deeply lobed, palmately compound leaves and a terminal raceme of small flowers.

*Potentilla
reptans*

Echium vulgare

Linaria vulgaris

Longe canadensis

Cirsium arvense





Hedera helix



Mercurialis
annua



Fragaria vesca



Campanula trachelium